

The next generation of **D-BOX** actuators is here. Benefit from a more robust and compact actuator form factor while retaining the same core architecture and software integration process that lifted **D-BOX** ahead of its competitors. The new generation comes in a more robust packaging, containing a quick start guide that outlines the key components as well as all the configuration steps needed to ensure the simplest of setup.

PERFORMANCE UNDER MAXIMUM LOAD	250I-3	400I-3
MAXIMUM LIFTING CAPACITY	250 lb / 114 kg	400 lb / 182 kg
HORIZONTAL LOAD	Translation on limited friction surfaces can be done on weights up to 3 times vertical lifting capacity.	
MAXIMUM STROKE	3 inch / 76.2 mm	
MAXIMUM VELOCITY	100 mm/s	
MAXIMUM ACCELERATION	+/- 1 g-force	
FREQUENCY RANGE	0-100 Hz	
OPERATING TEMPERATURE RANGE	0-40 °C	
OPERATING HUMIDITY	10 to 50 %	

POWER REQUIREMENTS			AVERAGE POWER To be used for electric consumption (Watts)	AVERAGE POWER To be used for converter specification (VA)	PEAK CURRENT To be used for breaker specification (A)
120 V 50/60 HZ	250 lb	1 TO 2 ACTUATORS	284 W	508 VA	5.1 A
		3 TO 4 ACTUATORS	568 W	1016 VA	10.1 A
	400 lb	1 TO 2 ACTUATORS	319 W	614 VA	6.8 A
		3 TO 4 ACTUATORS	639 W	1228 VA	13.6 A
230 V 50/60 HZ	250 lb	1 TO 2 ACTUATORS	262 W	524 VA	2.6 A
		3 TO 4 ACTUATORS	524 W	1048 VA	5.1 A
	400 lb	1 TO 2 ACTUATORS	256 W	578 VA	3.9 A
		3 TO 4 ACTUATORS	512 W	1156 VA	7.7 A

# SYSTEM OVERVIEW\*

## BRACKET OPTIONS



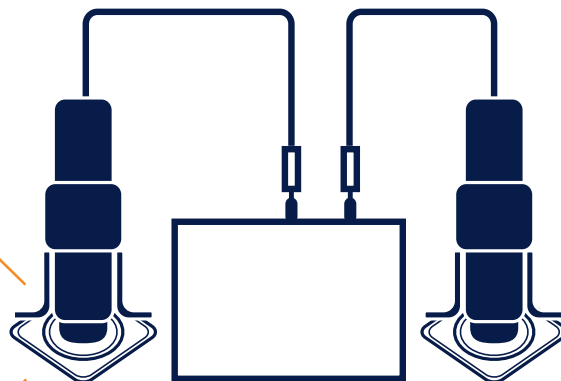
**L** Bracket



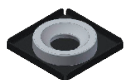
**U** Bracket



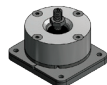
**H** Bracket



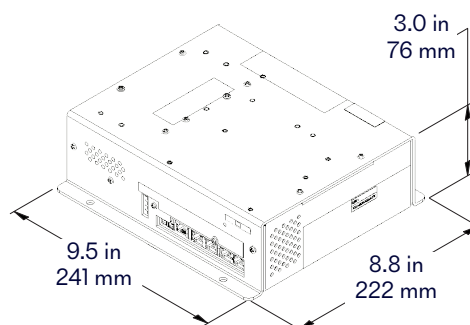
## ENDING OPTIONS



**NON CAPTIVE**  
ENDINGS



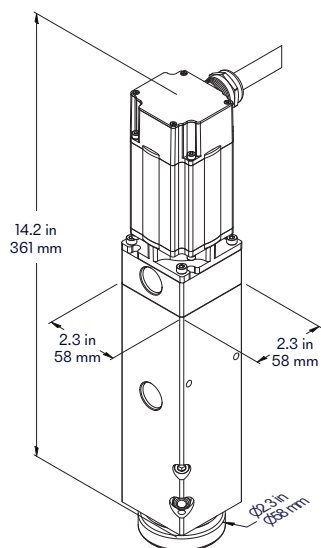
**CAPTIVE**  
ENDINGS



\*Two actuator system

## 3" ACTUATOR FAMILY

**250 I-3**



**400 I-3**

